

EIB-16-QC

The Electrode Interface Board EIB-16-QC is mounted to microdrive hardware and provides the electronic signal connection between electrode wires and 16 channel Neuralynx Headstage Pre-amplifiers (HS-16-QC). The EIB-16-QC also provides mechanical connection between microdrive hardware and the HS-16-QC.

The EIB-16-QC does not contain any active electronics, and can pass signals in either direction. The HS-16-QC will define the signal direction via its buffer amplifiers.

HS-16-QC Connection

The HS-16-QC will only mount to the EIB-16-QC in one direction. Align the “QC” logos on both the HS and EIB for easy connection. Please see the connection method white paper at neuralynx.com/qc for more information.

EIB-16-QC Mounting

The EIB-16-QC is designed for mounting on a microdrive. Use the screw holes to mount the EIB-16-QC securely to a microdrive.

Electrode Connection

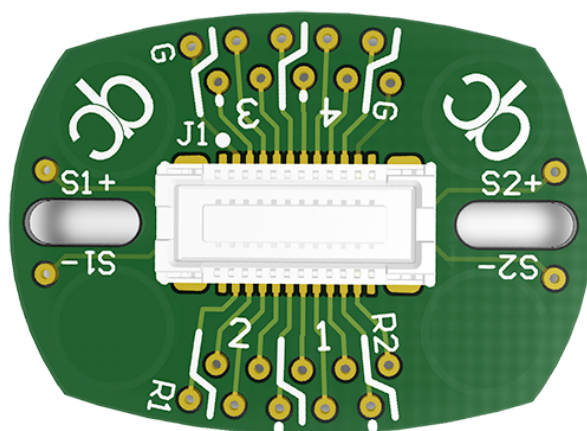
Electrode wires are inserted from the bottom or top of the board. Insulation does not need to be removed from the wire if using Neuralynx EIB

Pins. See the Electrode Attachment Guide for more information on using EIB Pins. This EIB uses small gold pins.

EIB Reuse

Reuse of the EIB-16-QC is possible, but not recommended. If reuse of the EIB-16-QC is required, please contact Neuralynx for assistance.

Size (L x W)	17 mm x 12.5 mm
Signals	16 signals, 2 stim, 2 ref, 1 gnd
Connection	QuickClip™
Weight	0.75 grams
Mounting	2 side mounts 10 mm apart
EIB Pins	Small Gold Pins



9 out of 10 rats
recommend the
Neuralynx QuickClip™
over traditional
connectors

