

The Electrode Interface Board EIB-36-QC-Simple is mounted to microdrive hardware and provides the electronic signal connection between electrode wires and 36 channel Neuralynx Headstage Pre-amplifiers (HS-36-QC). The EIB-36-QC-Simple also provides mechanical connection between microdrive hardware and the HS-36-QC.

The EIB-36-QC-Simple does not contain any active electronics, and can pass signals in either direction. The HS-36-QC will define the signal direction via its buffer amplifiers.

### HS-36-QC Connection

The HS-36-QC will only mount to the EIB-36-QC-Simple in one direction. Align the “QC” logos on both the HS and EIB for easy connection. Please see the connection method white paper at [neuralynx.com/qc](http://neuralynx.com/qc) for more information.

### EIB-36-QC-Simple Mounting

The EIB-36-QC-Simple is designed for mounting on a microdrive. Use the screw holes to mount the EIB-36-QC-Simple securely to a microdrive.

### Electrode Connection

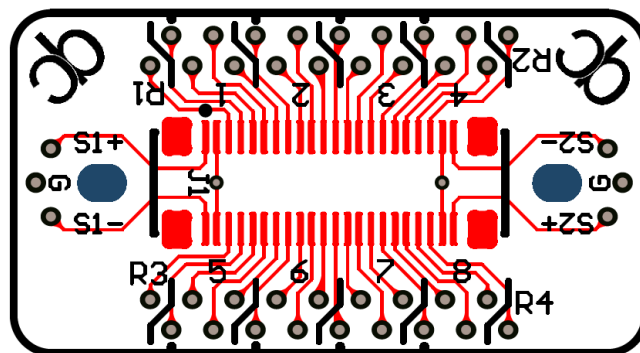
Electrode wires are inserted from the bottom or top of the board. Insulation does not need to be

removed from the wire if using Neuralynx EIB Pins. See the Electrode Attachment Guide for more information on using EIB Pins.

### EIB Reuse

Reuse of the EIB-36-QC-Simple is possible, but not recommended. If reuse of the EIB-36-QC-Simple is required, please contact Neuralynx for assistance.

Size (L x W)	21.34 mm x 11.43 mm
Signals	32 signals, 2 stim, 4 ref, 1 gnd
Connection	QuickClip™
Weight	0.9 grams
Mounting	2 side mounts 15 mm apart
EIB Pins	Small Gold Pins



9 out of 10 rats recommend the Neuralynx QuickClip™ over traditional connectors

